

Public Document Pack

North and East Plans Panel 17th November 2022

PRESENTATION SLIDES

This page is intentionally left blank

NORTH & EAST PANEL

THURSDAY 17th November



Doing our best – to be the Best Council in the Best City

1



APPLICATION: 20/08412/FU

PROPOSAL: Construction of a new community sports hub including 4No. floodlit artificial grass pitches enclosed by metal ball-stop fencing, car parking and associated landscaping works are also proposed to connect the development to the wider Green Park, including a lit footpath link from the Redrow housing development to Austhorpe Primary School; external sub-station and bin store

ADDRESS: Land Off Thorpe Park
Park Approach, Leeds, LS15



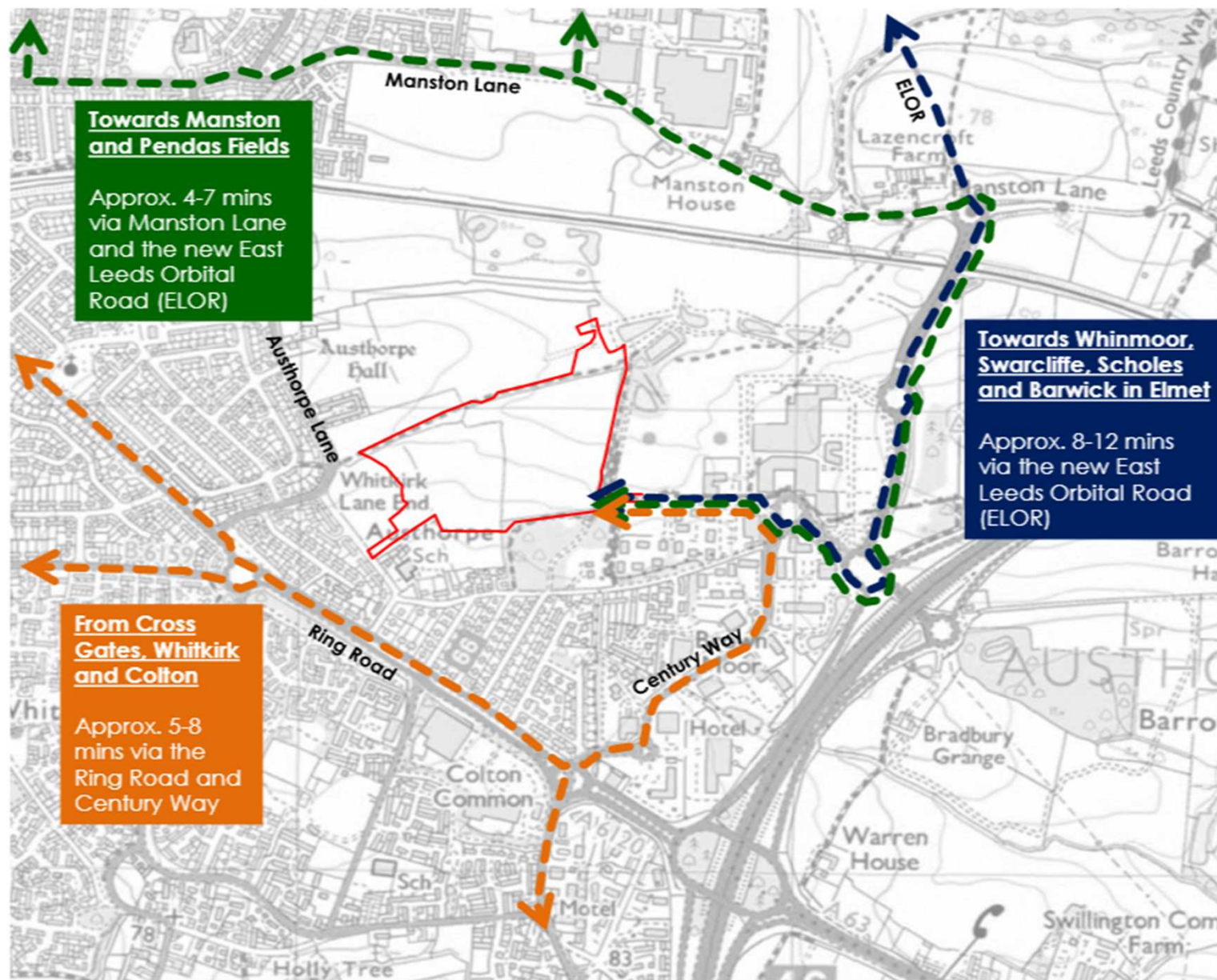


© Bluesky International Ltd and Getmapping Plc [2022]

PLANS PANEL PRESENTATION

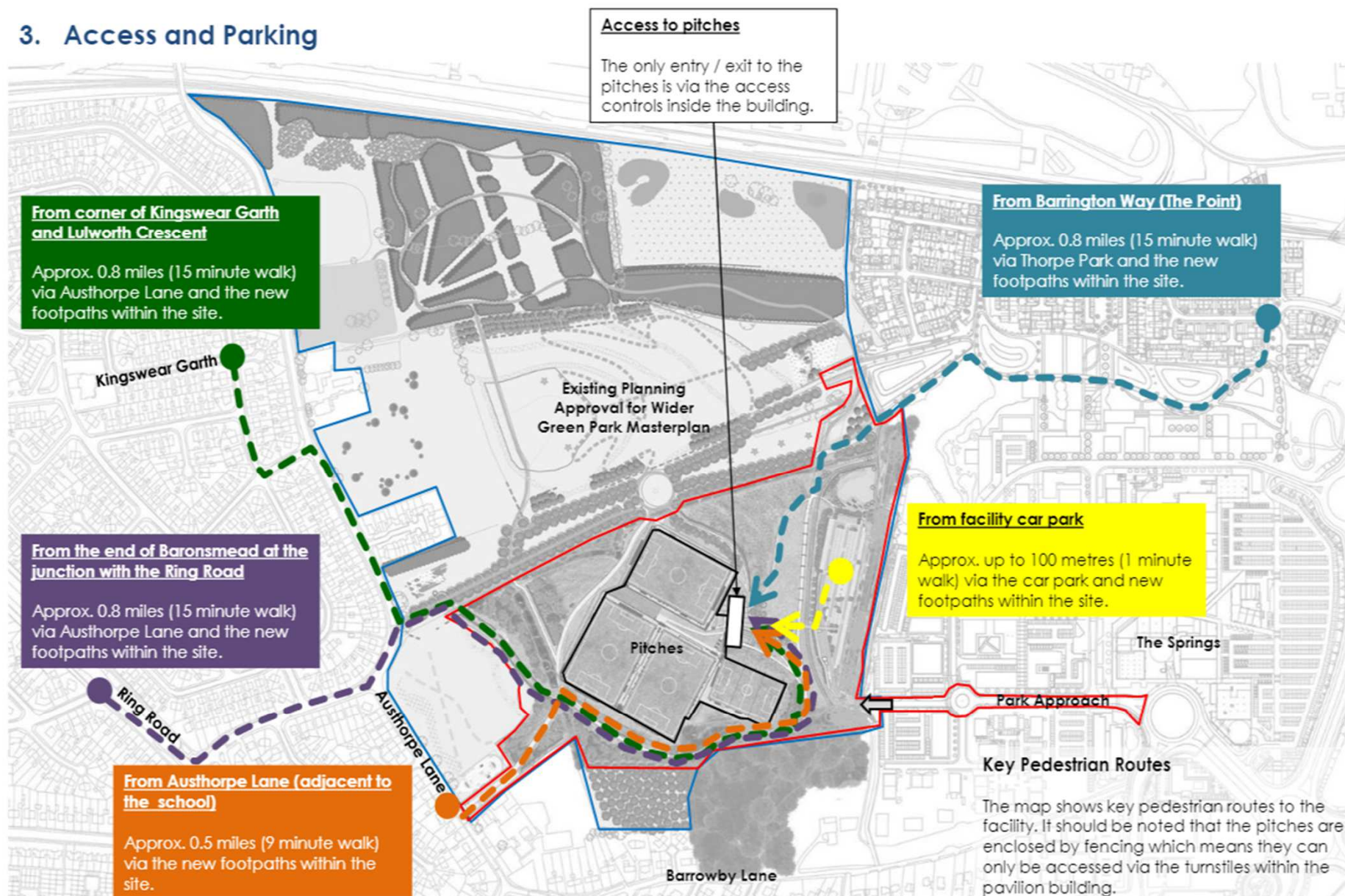
SCALE 1:3500





Existing map showing key vehicular routes to the facility

3. Access and Parking



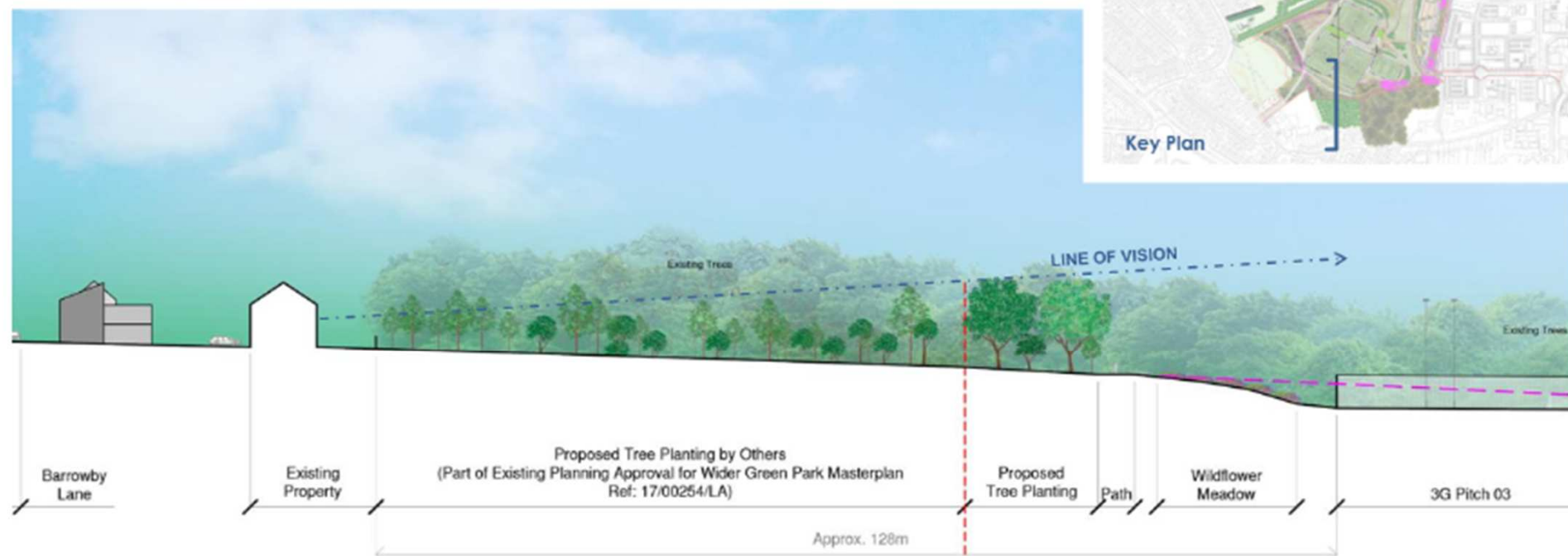
Existing map showing key pedestrian routes to the facility

\oplus

2017-18 GRB	ELBENSGR-17-18B-01	LEAD BY SF	APPROVED BY RC
S2	Planning Approval		

5. External Lighting

Proposed Site Section A-A



The following measures have been taken in the preparation of the external lighting scheme to limit the potential for glare and stray light:

- Sports pitch floodlights mounted at 12m-15m high to achieve a lower floodlight angle and concentrate lighting onto the sports pitches limiting overspill and glare.
- Post top luminaires within car parking areas mounted on 6m columns to be provided with control optics designed to limit the beam angle within 70 degrees, to avoid glare and upward light distribution.
- The post top luminaires are to be provided with control optics that are designed to provide an asymmetric light distribution to minimise light overspill from the site.
- Louvers fitted to sports pitch lighting to reduce back spill light and provide a more concentrated light distribution to the sports pitches.
- Luminaires to comply with Dark Sky Association Guidance which stipulates that no luminaires with outwards or sideways light distribution shall be used to aid reduction of luminaire intensity.

APPLICATION
BOUNDARY

- Additional measures will also be taken to reduce the impact on bats. In accordance with ILP Guidance Notes 1 and 8 and Eurobats.
- Pitches located over 100 metres away from nearest residential properties;
- Pitches set into the existing slope / topography to provide a buffer between these and the surrounding properties – minimising noise and light impact;
- Tree and shrub planting proposed to further reduce the light impact on surrounding areas.

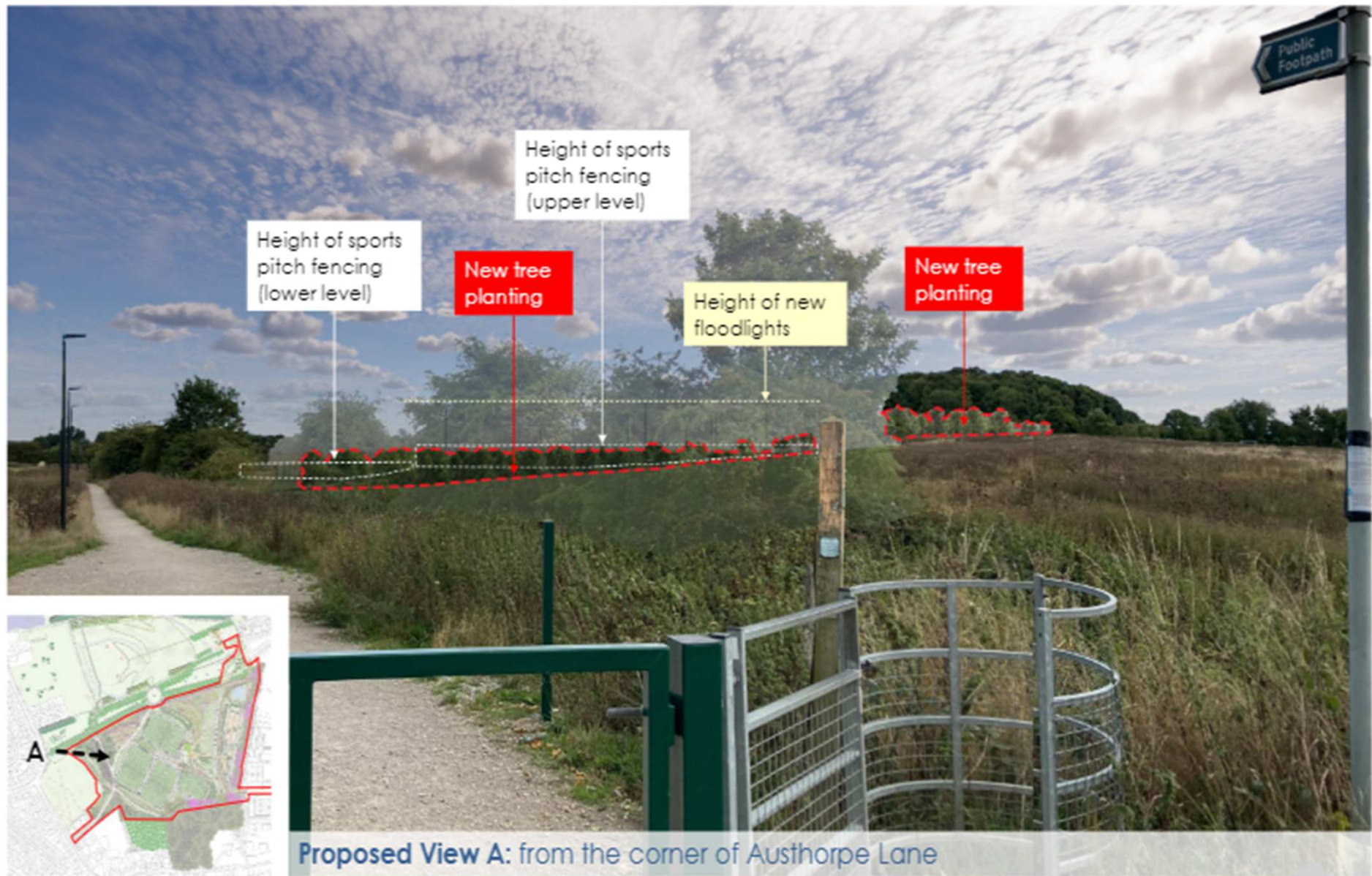
6. Existing and Proposed Views



6. Existing and Proposed Views



6. Existing and Proposed Views



6. Existing and Proposed Views



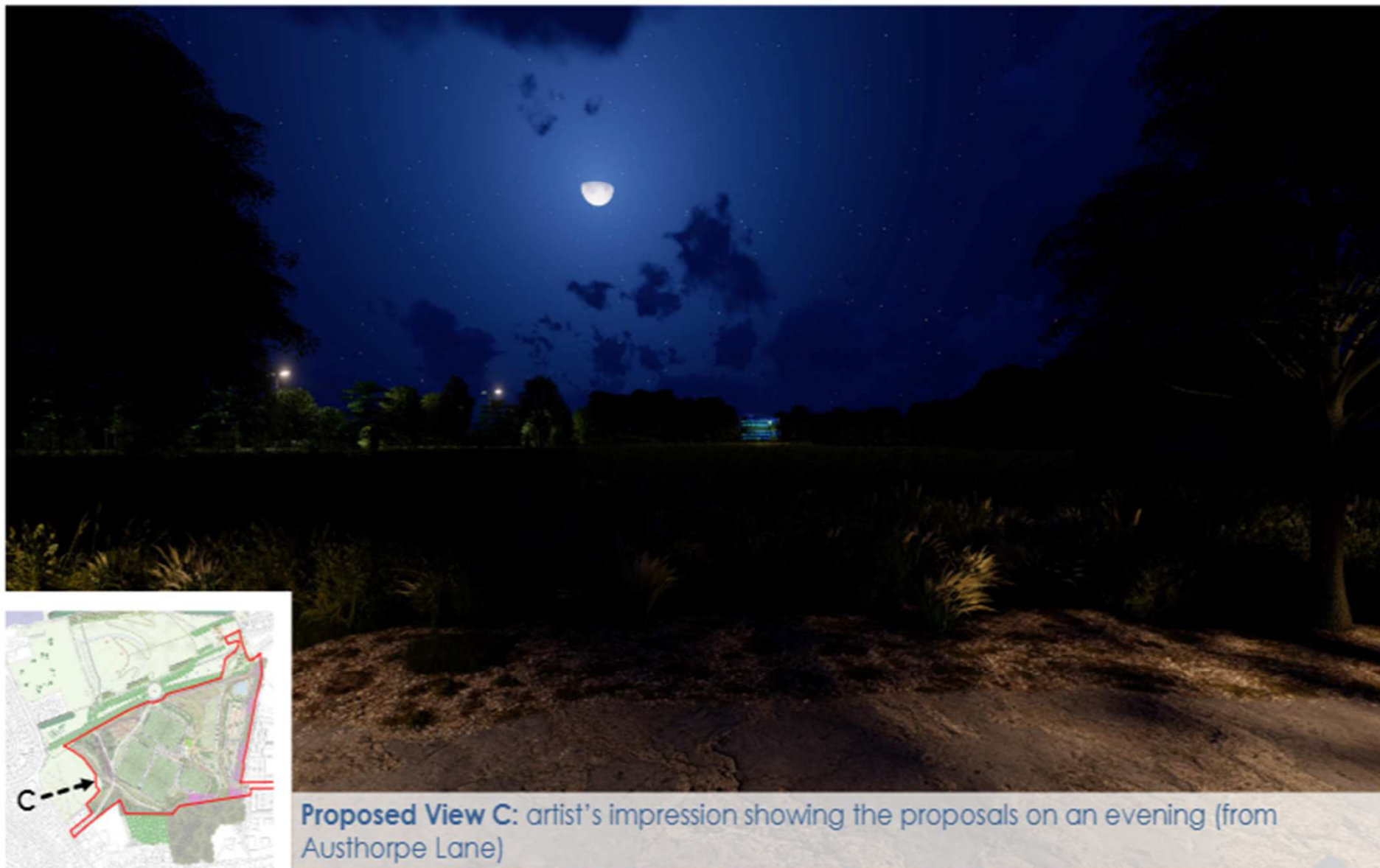
6. Existing and Proposed Views



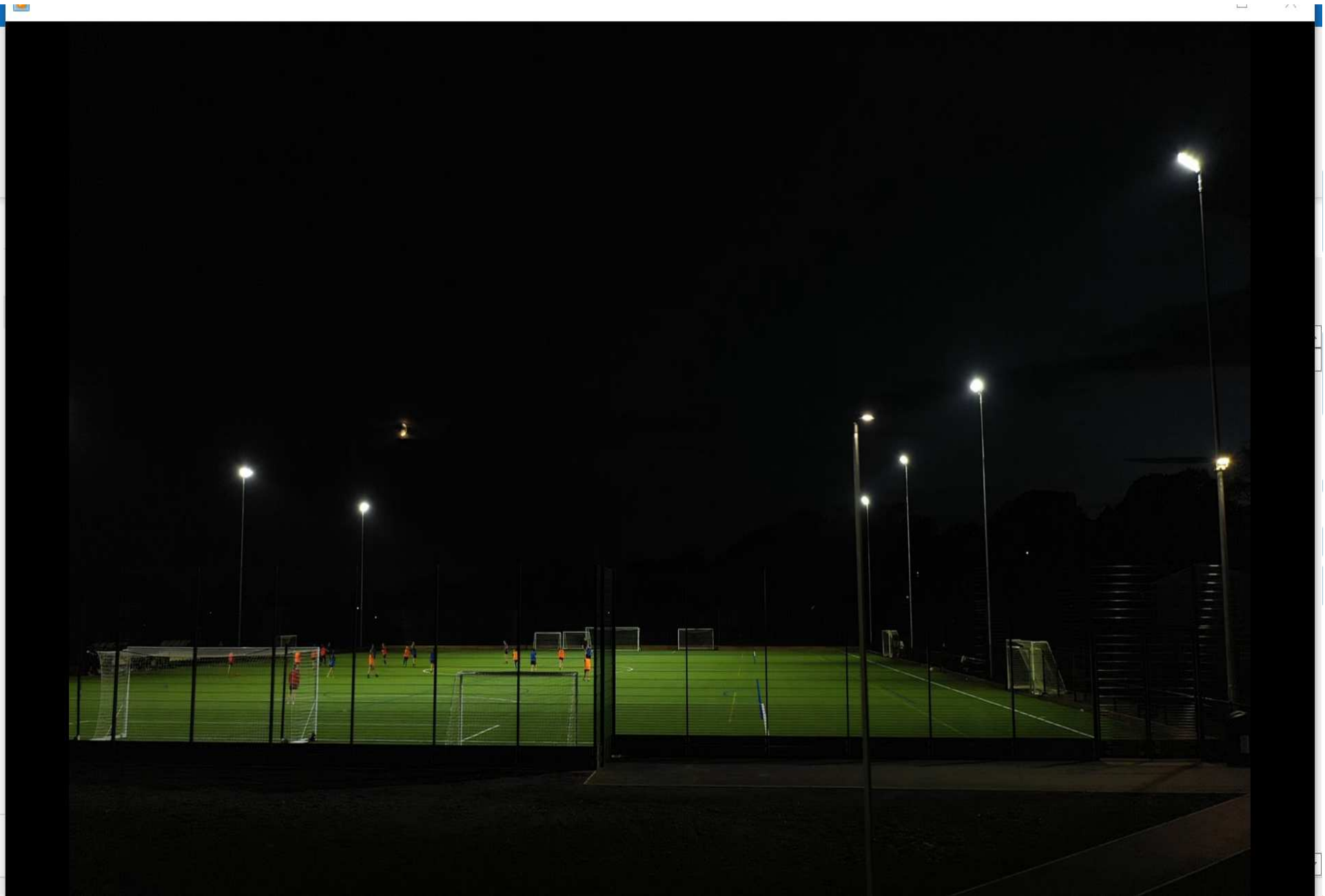
6. Existing and Proposed Views



6. Existing and Proposed Views

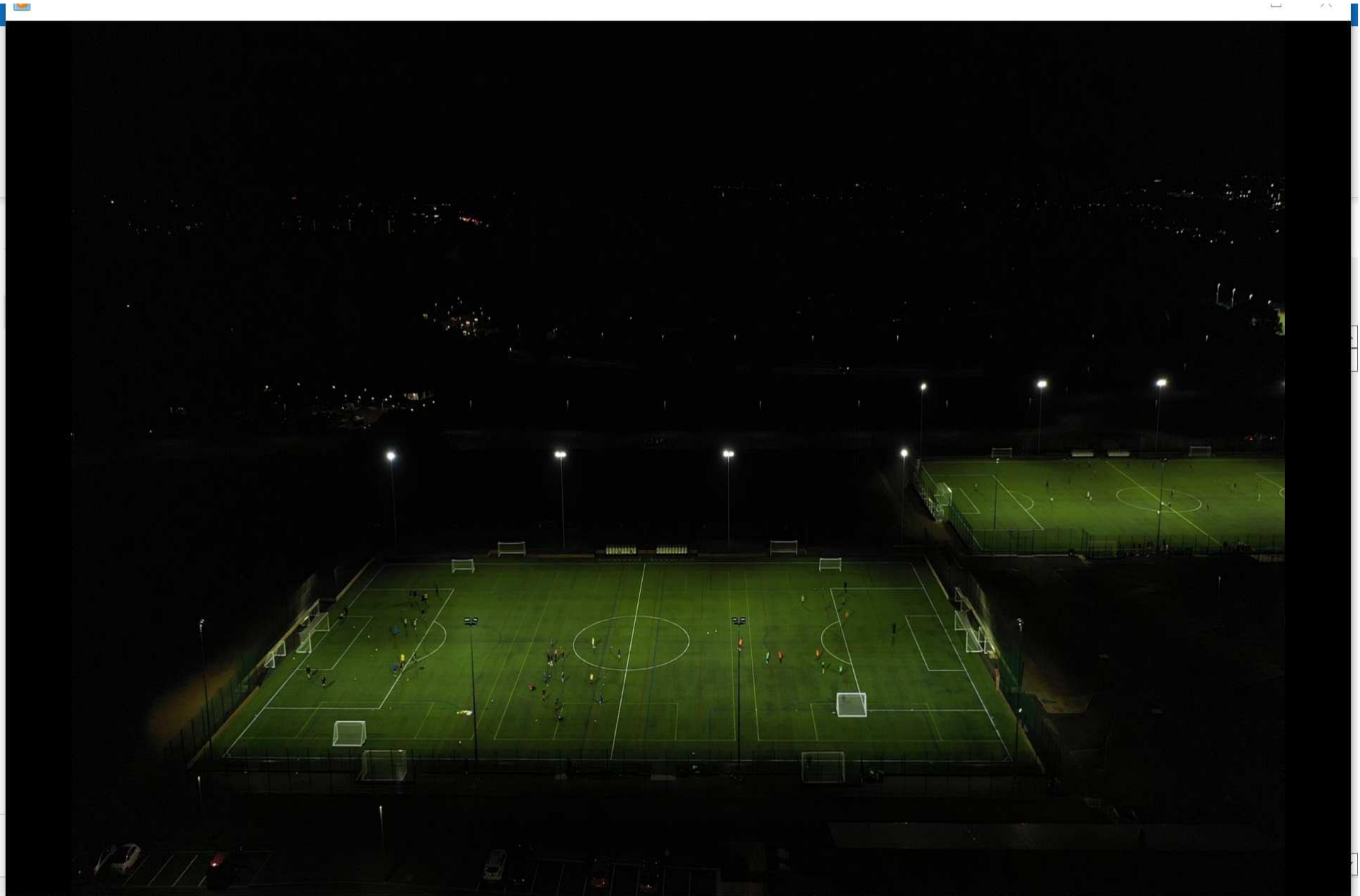






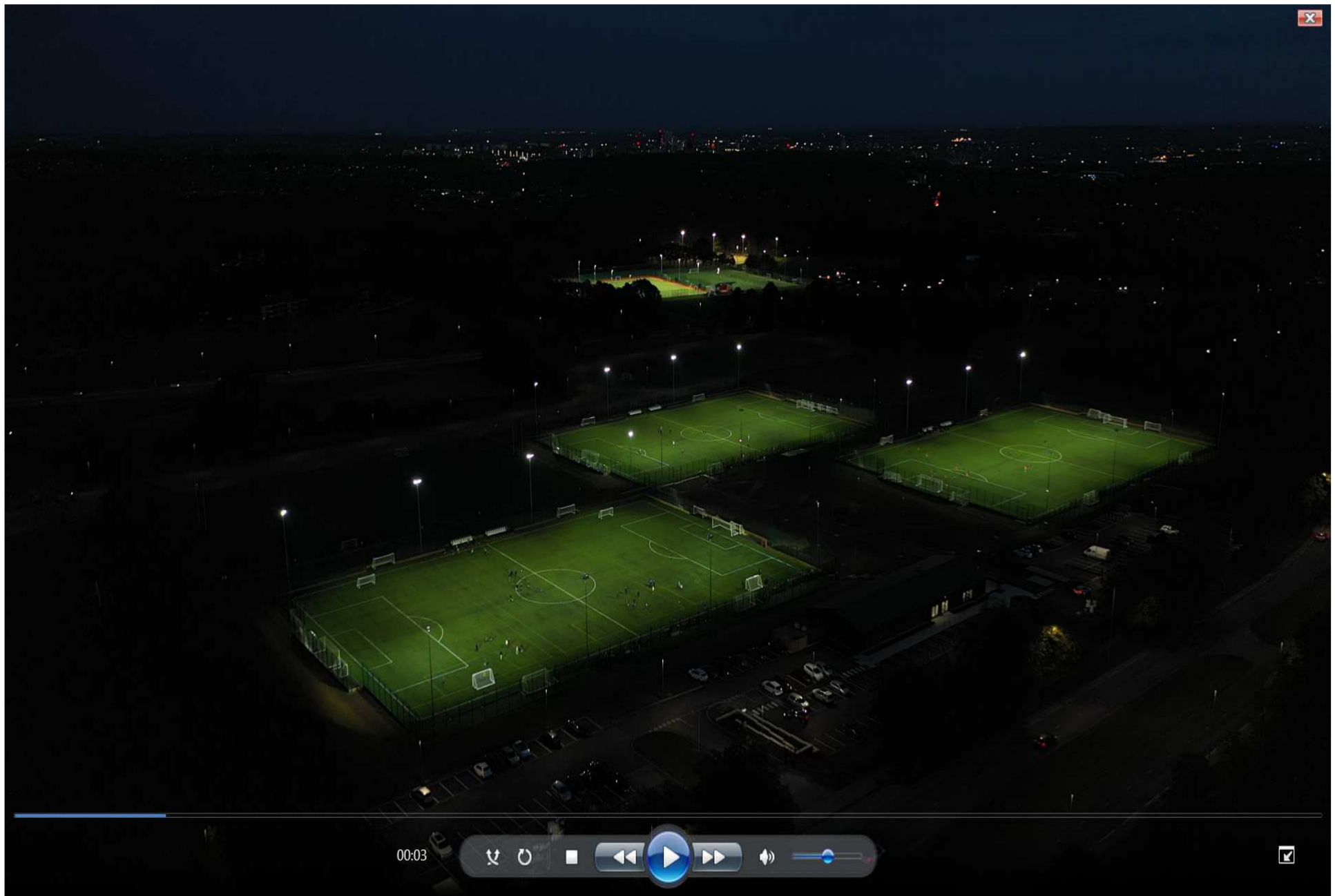


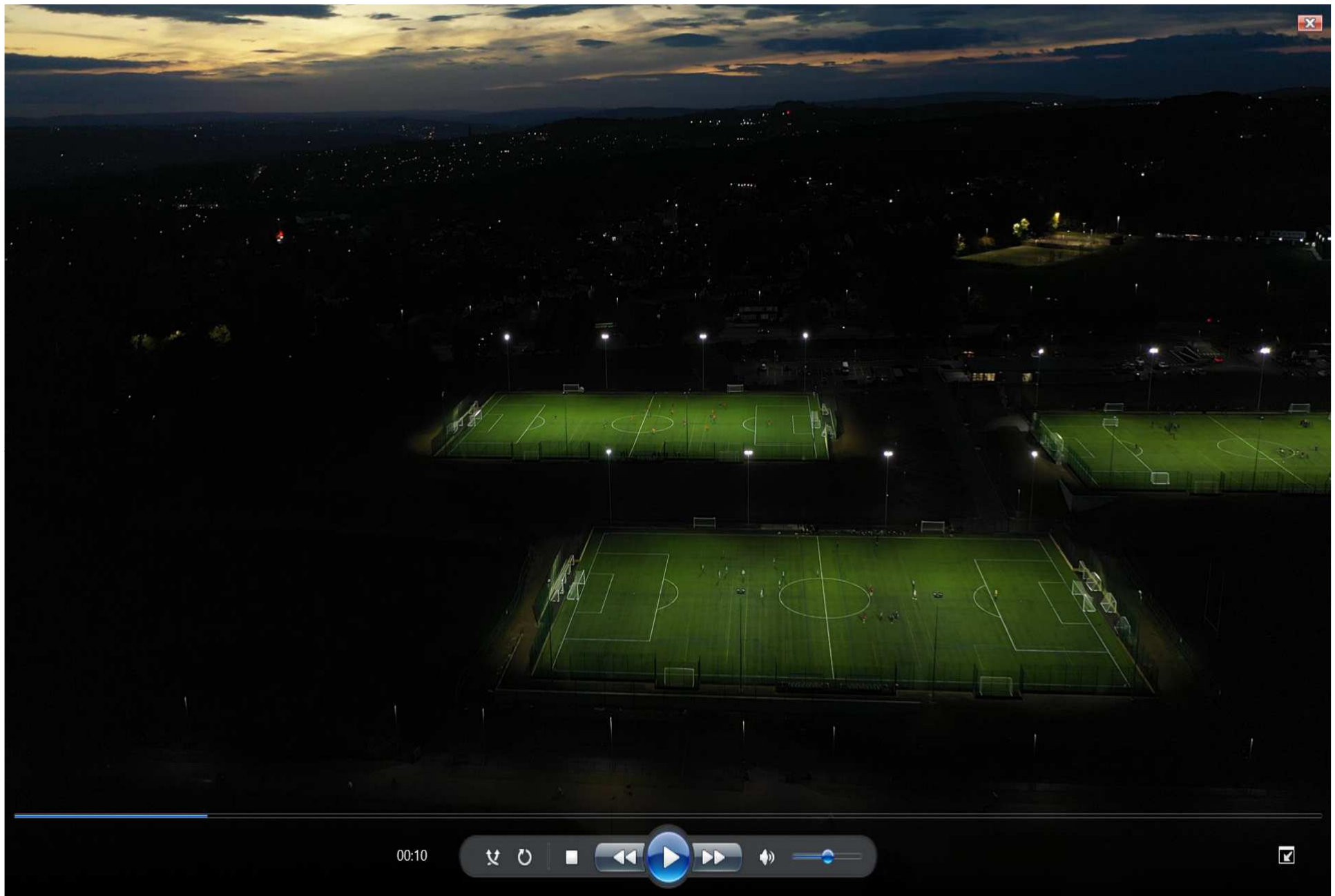












00:10

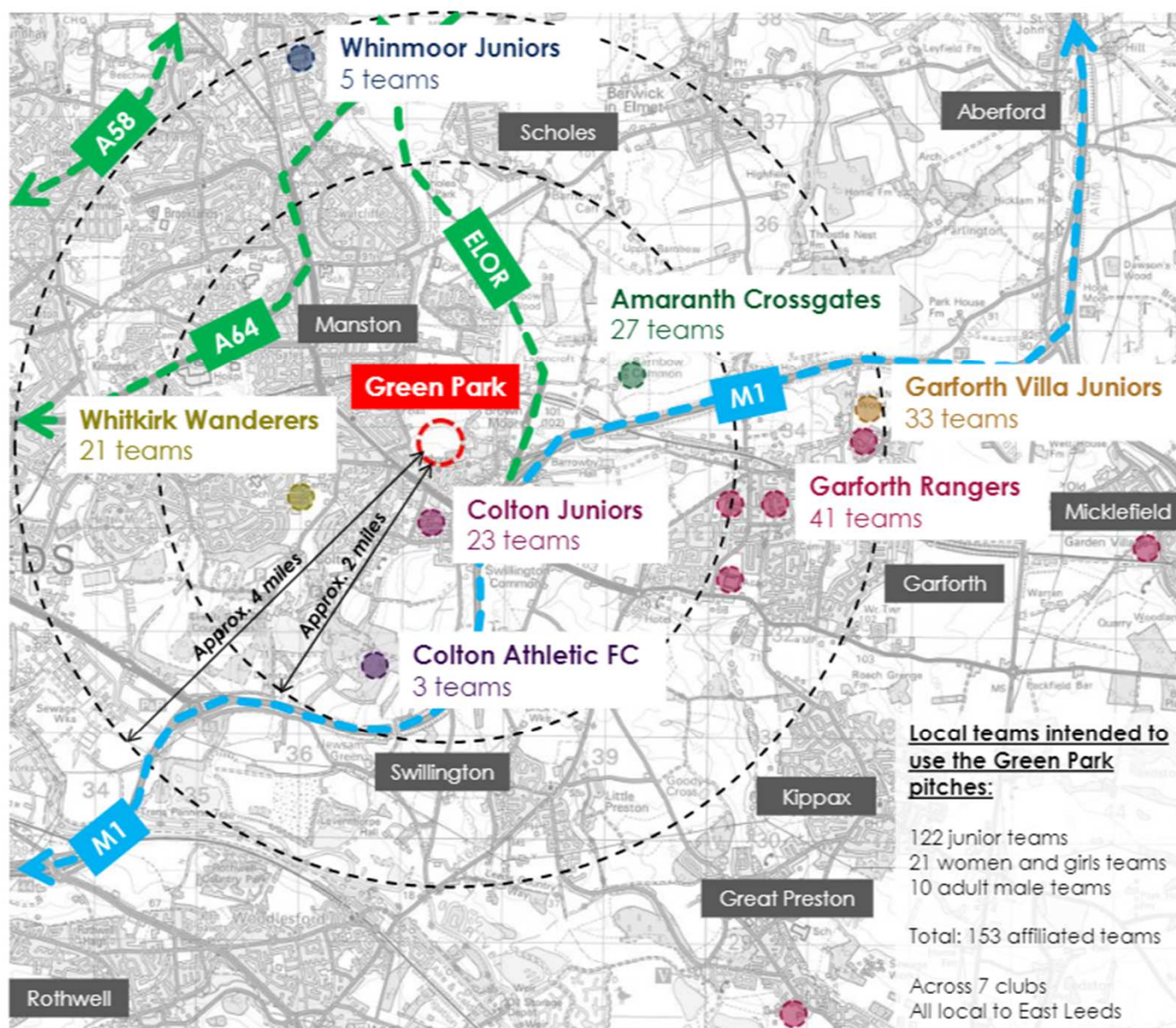




Example photographs showing detox grids (located at pitch entrances)

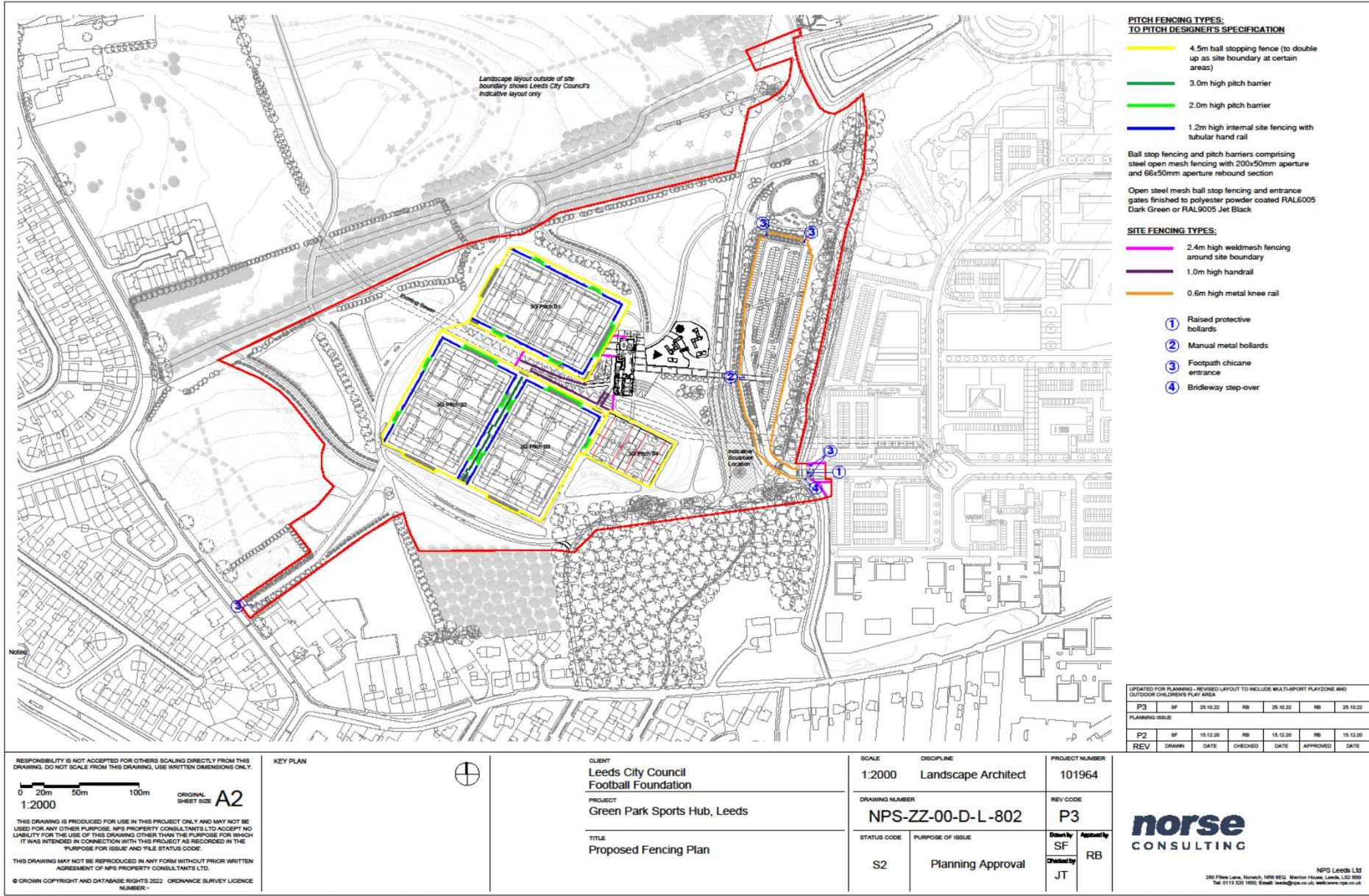


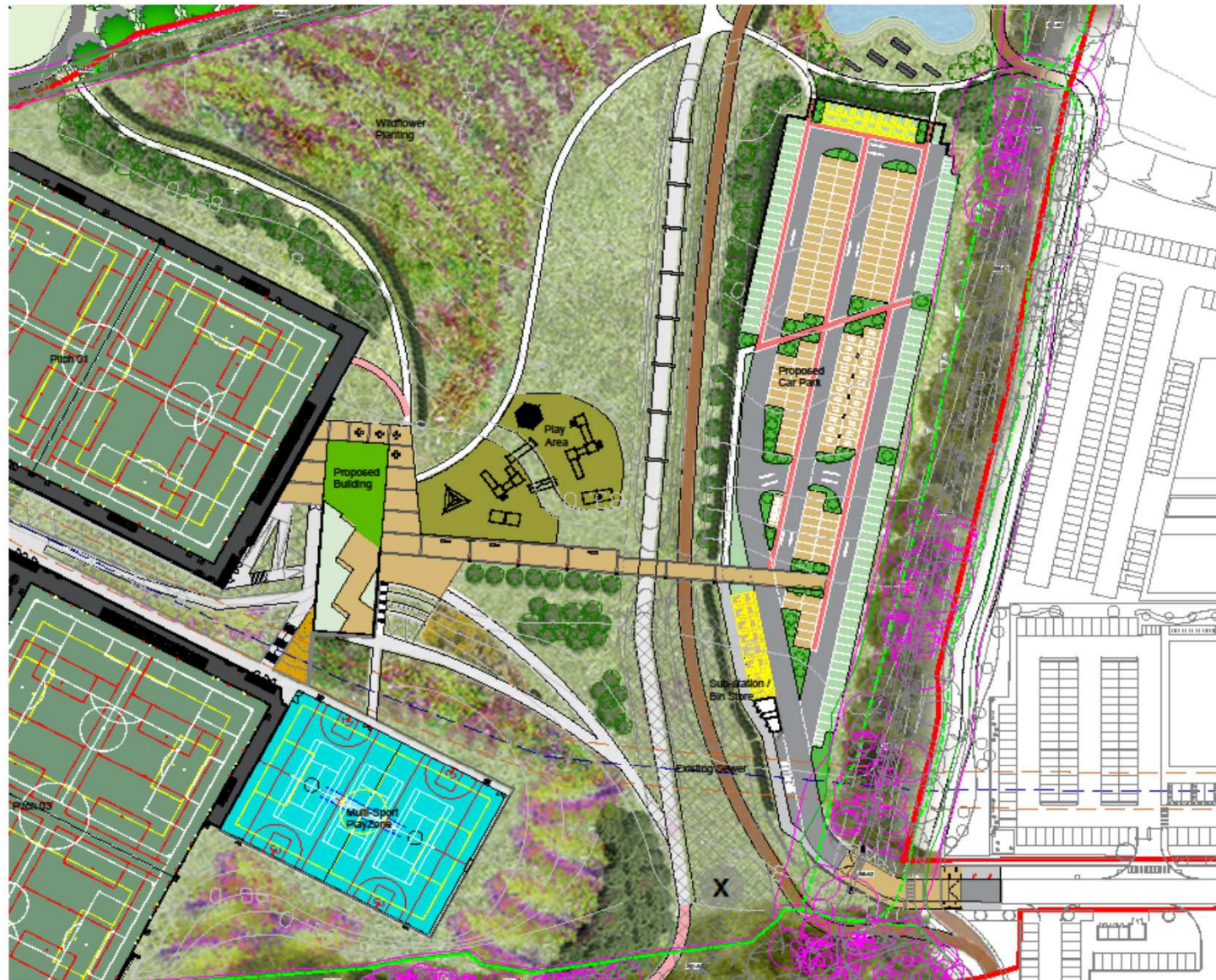
Example photographs showing Trekboards which help prevent the spread of rubber crumb



Existing map showing the local clubs intended to use the facility at Green Park

[illegible]





RESPONSIBILITY IS NOT ACCEPTED FOR OTHERS READING DIRECTLY FROM THIS DRAWING. DO NOT SCALE FROM THIS DRAWING. USE METRIC DIMENSIONS ONLY.

ORIGINAL
SHEET NO. A3

THIS DRAWING IS PROVIDED FOR USE IN THIS PROJECT ONLY AND MAY NOT BE USED FOR ANY OTHER PURPOSE. THE PROPERTY CONSULTANTS LTD. ACCEPTS NO LIABILITY FOR THE USE OF THIS DRAWING OTHER THAN THE PURPOSE FOR WHICH IT WAS PREPARED. IN CONNECTION WITH THIS PROJECT, AS REQUIRED BY THE PRACTICE FOR SALE AND THE RESULTS OF THE SURVEY.

THIS DRAWING MAY NOT BE REPRODUCED IN ANY FORM WITHOUT PRIOR WRITTEN PERMISSION.

© CROWN COPYRIGHT AND DATABASE RIGHTS 2010 ORDNANCE SURVEY. LICENSE NUMBER 100123456.



Scale
0 10m 25m 50m
1:1000

Application Site Boundary

Proposed Vehicle Parking

Type	Total Proposed
Standard space	195
Accessible spaces	13
Motorcycles	16
Cycle spaces	14
EV charging bays	23
EV (accessible)	2
Coach drop-off	2

QUOTES FOR FURNISHING, LABOUR & MATERIALS FOR PLAYERS AND SPECTATORS ONLY (SEE PLAY AREA)

ITEM	QTY	UNIT	PRICE	TOTAL	DATE
P1	1	sq	25.00	25.00	25.00
P2	1	sq	25.00	25.00	25.00
P3	1	sq	25.00	25.00	25.00

QUOTES FOR FURNISHING

ITEM	QTY	UNIT	PRICE	TOTAL	DATE
F1	1	sq	25.00	25.00	25.00
F2	1	sq	25.00	25.00	25.00
F3	1	sq	25.00	25.00	25.00

norse
CONSULTING

NPS/1400/1.0
30 Farnley Road, Leeds LS10 4BQ, West Yorkshire, Leeds LS10 4BQ
Tel: 0113 251 1111 Email: norse@norseconsulting.co.uk

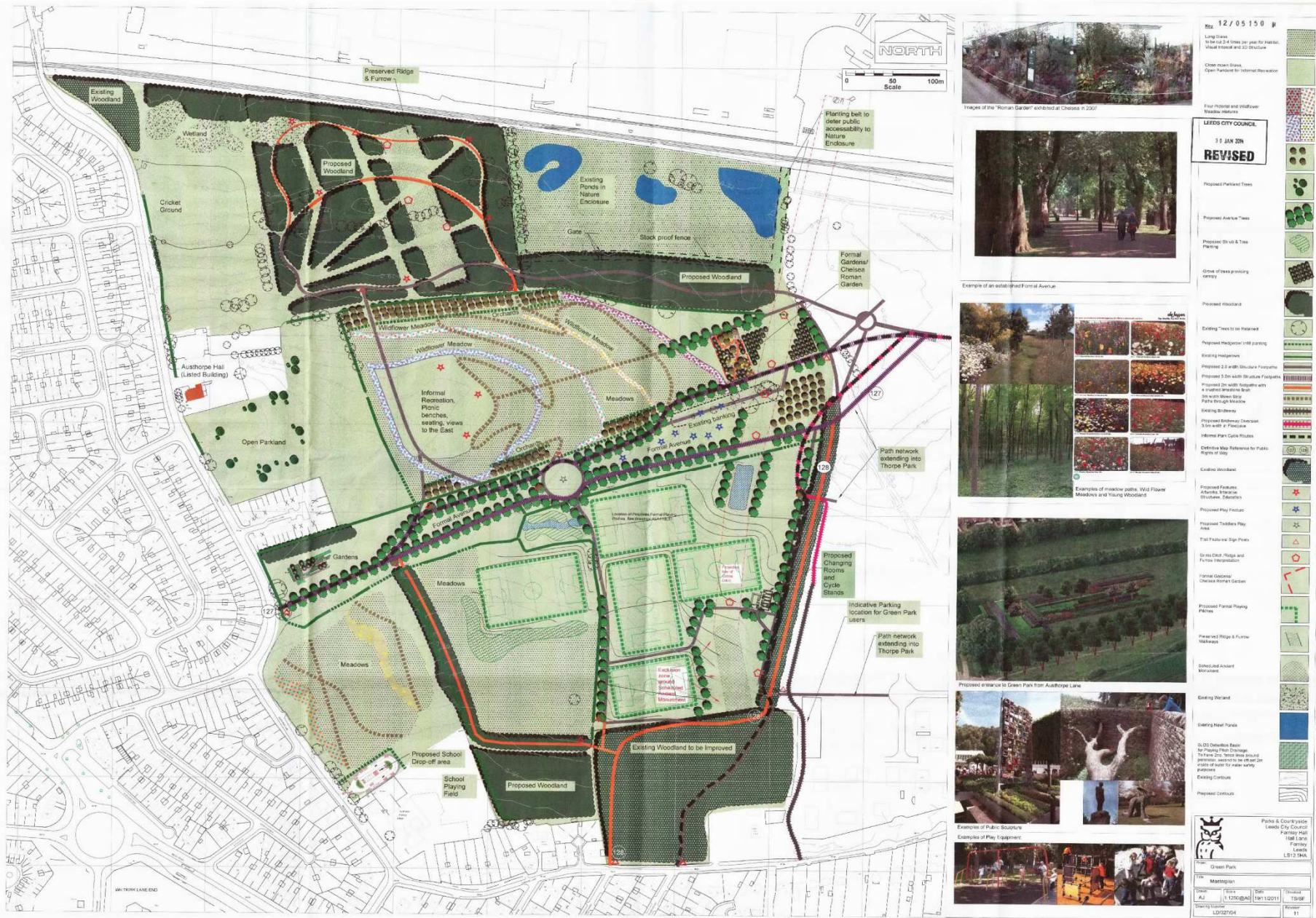
CLIENT
Leeds City Council
Football Foundation

PROJECT
Green Park, Leeds

TITLE
Proposed Car Park

SCALE	DISCIPLINE	PROJECT NUMBER
1:1000	Architect	101954
DRAWING NUMBER	REVISION	
NPS-ZZ-00-D-A-064	P3	
STATUS CODE	PURPOSE OF ISSUE	
S2	Planning Approval	
	SF	RB

File Path: G:\Green Park Leisure Sports Pavilion & Pitches 101954\Design\101954-A010 Drawing Sheets\Planning Set\101954-NPS-CRA-00-062 - Proposed Site Planning, Saved: 26 October 2022 11:53:21, By: Planning, Serial



PLANS PANEL

THURSDAY

END OF PRESENTATION



Doing our best – to be the Best Council in the Best City

33

This page is intentionally left blank